

174-230MHz TV Panel Arrays 657, 658 Series

Product Description

This series of panel antennas has been designed for three sided arrays and provides a customized horizontally polarized coverage for single or multistation use in Band III. Model 657 has a nominal gain of 7dBd and the 658 has a nominal gain of 10dBd.

Construction from thick walled tube and solid steel bar gives a heavy duty panel which is designed for operation in very harsh environments. This design also ensures ideal hot dip galvanizing for optimum corrosion protection. Colours are available for aviation visibility and even further corrosion protection.

The coaxial feed system can be fully pressurized and features twin 'O' ring seals on the feed point insulators. The panels are tolerant of light icing (radomes are available for use under heavy icing conditions down to -40 degrees C) and has a very low VSWR (typically less than 1.05:1) over the entire 174 - 230MHz band depending on the system configuration.

These panels are ideal array elements for triangular mast with a 1.2m face and can provide omnidirectional patterns with less than ± 1 dB variation. By varying the number and positions of panels and feed amplitude/phase, patterns can be customized to optimize coverage over a given service area. The use of three panels around the structure offers significant cost and wind load reduction over four sided arrangements.



657 Panel

Features/Benefits

- Suitable for single or dual channel use
- Three sided array design - lower cost
- Cyclone rated
- Rugged galvanized steel construction for maximum corrosion protection
- Low wind load
- Pressurizable coaxial feed
- Horizontal polarization
- Array design allows a variety of standard horizontal radiation patterns as well as customised patterns, contact RFS for details
- Medium power, unpressurized version available
- Temperature range -40 to +60 degrees C available

For detailed technical information use the external document link below.

Technical Specifications

Product Line	Antenna TV
Product Type	Band III (High VHF) TV Panel Arrays
Frequency Range, MHz	174 - 230
Operating Frequency Ranges, MHz	174 - 202, 202 - 230
Polarization	Horizontal
Number of Channels	Multichannel
Nominal Gain (Mid-band), dBd	10
Half Power Beamwidth Azimuth, degrees	77
Return Loss, dB	23
Input Connector	7-16 DIN; 7/8" EIA Flange
Power Rating, kW	3; 4 Note#1
Impedance, ohms	50 unbalanced
Weight, kg (lb)	75 (166)
Mounting (Standard), mm (in)	4 x 12mm (1/2) bolts
Effective Area Front (full antenna), sq m (sq ft)	0.80 (8.61)
Effective Area Side (full antenna), sq m (sq ft)	1.10 (11.83)
Design Wind Speed (max), km/h (mph)	240 (150)
Pressurization Operational, kPa (psi)	10 - 25 (1.5 - 3.6) 7/8" EIA Version
Pressurization Test, kPa (psi)	100 (15) 7/8" EIA Version
Material - Insulators	PTFE
Material - Radiators	Hot Dipped Galvanised steel
Material - Reflecting Screen	Hot Dipped Galvanised steel

Notes

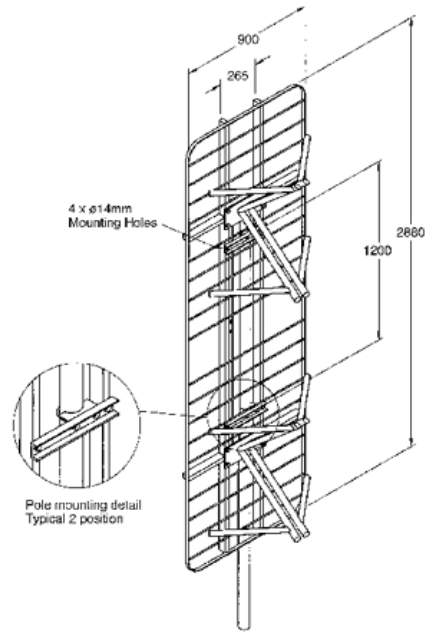
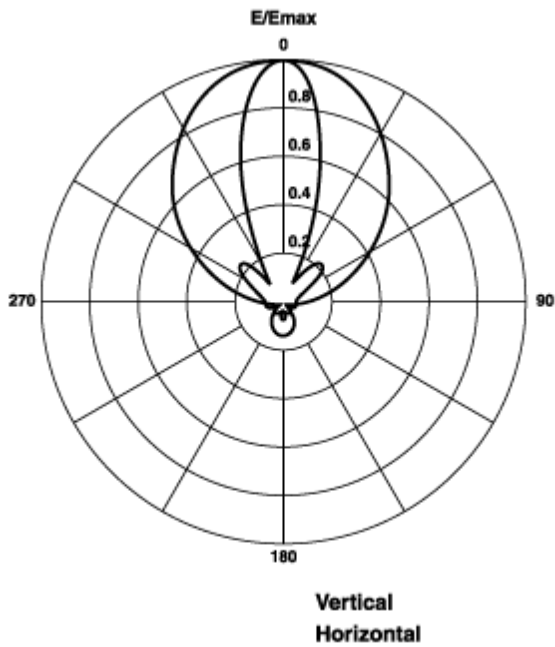


174-230MHz TV Panel Arrays 657, 658 Series

Note1 Power rating is limited by the input connector type. 3.0kW for 7-16 DIN, 4kW for 7/8" EIA

Other Documentation

658 Array Application Guide: [658 array application guide.pdf](#)



All information contained in the present datasheet is subject to confirmation at time of ordering