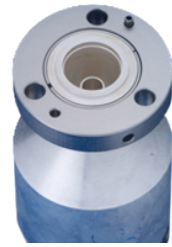




7/8" EIA Female Connector for 7/8" Coaxial Cable, RAPID FIT™ Plast 2000 sealing

Product Description

Radio Frequency Systems line of high performance coaxial cable connectors are designed specifically to provide the highest quality connector-cable interface while simplifying and speeding up the attachment of connectors to HELIFLEX® coaxial cables. RFS connectors are fully tested for mechanical and electrical compliance specifications. They are available in all popular cable sizes in a variety of mating interfaces. To join two cables with EIA connectors, two identical socket connectors are installed on either end of the cables to be joined, and a coupling element is used to make the connection of the center conductor. The coupling element must be ordered separately with the exception of the S-Line male versions that have a captivated coupling element. Connectors are available in sizes matching the nominal cable size. EIA connectors provide optimal power handling for the complete transmission line system.



Connector EIA 7/8"

Features/Benefits

- Excellent gas tightness, Overpressure for increased voltage handling is maintained throughout the system
- Robust Mechanical Design, Superior and consistent performance guarantees outstanding system characteristics.
- Extremely low reflection factor, Outstanding low reflection factor improves overall system performance and margin and reduces mismatch losses
- Totally Waterproof according to IP 68, Assures safe, long term operation in the harshest of environments. System tightness doesn't have to rely on overpressure from dehydration equipment.

Technical Specifications

Transmission Line Type	Coaxial Cable
Cable Size	7/8"
Cable Type	Air Dielectric
Model Series	HCA78-50 Series
Connector Interface	7/8" EIA
Connector Type	RAPID FIT™
Sealing Method	Plast 2000
Gender	None
Plating Outer/Inner	Silver/Silver
Length, mm (in)	91 (3.58)
Outer Diameter, mm (in)	57.2 (2.25)
Weight, kg (lb)	0.54 (1.19)
Inner Contact Attachment	Spring Finger
Outer Contact Attachment	Threaded
Wrench size front, mm (in)	36 (1-7/16)
Wrench size rear, mm (in)	32 (1-1/4)
Sealing Volume, cm3 (ounces)	5 (0.17)

Notes

Other Documentation

Installation Instruction: [01-M301970.pdf](#)